

LEISTER Groover Grooving machine



Please read operating instructions carefully before use and keep for future reference.

APPLICATION

- Cutting welding grooves into floor coverings of:
tiles,
rolls,
nap-tiles and -rolls





WARNING



Danger! Unplug the tool before opening it, as live components and connections are exposed.



Use earmuff!



Risk of injury from touching the cutting blade.



Risk of injury by ejected particles. Ejector pipe and dustbag must be fitted.



CAUTION



The voltage rating stated on the tool must correspond to the line/mains voltage.



For personal protection, we strongly recommend the tool to be connected to an **RCCB (Residual Current Circuit Breaker)** / **GFCI (Ground Fault Circuit Interrupter)** before using it on building sites.



The equipment must be operated **with supervision.**



Protect the tool from **damp and wet.**



APPROVAL MARKS

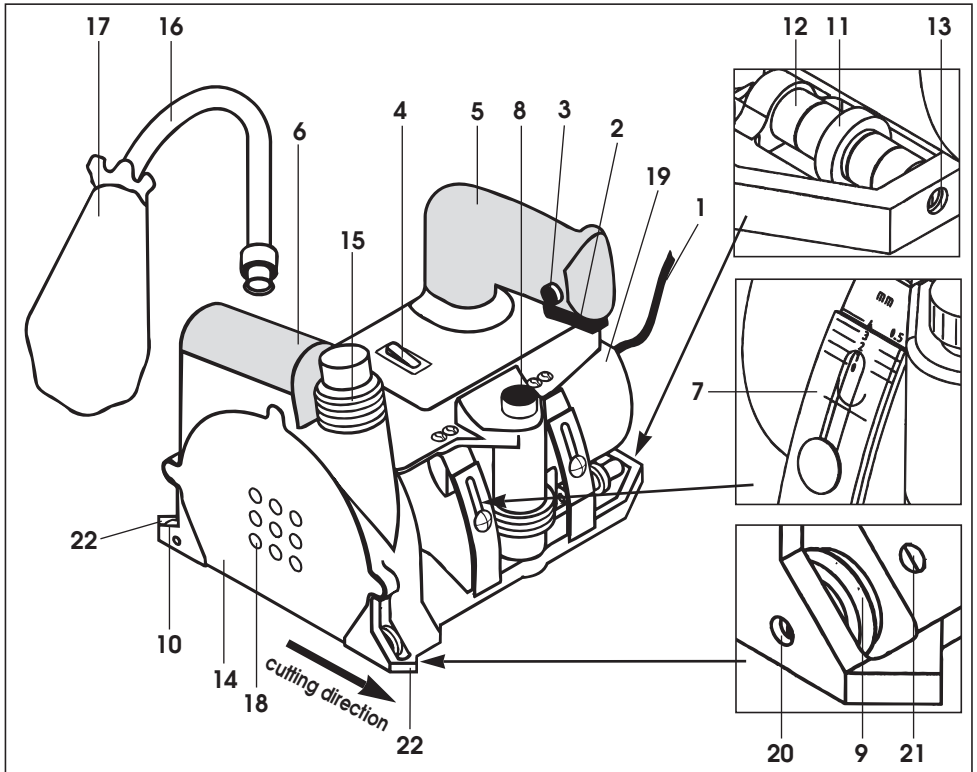
This tool is **CCA** certified (CENELEC Certification Agreement).

TECHNICAL DATA

Electrical safety **double insulated**

Voltage	V~	120, 230
Frequency	Hz	50 / 60
Power consumption	W	350, 700
Cutting speed	rpm	Pos 1: 14500, Pos 2: 18000
Noise emission level	L_{pA} (dB)	84
Sound pressure level	L_{WA} (dB)	100
Vibration acceleration	a_{hw} (m/s²)	1.6
Groove depth adjustment	mm	0 – 4, infinitely
	inch	0 – 3/16
Weight	kg	6,7 } with 3 m (10 feet.) cord and 14,7 } ejector pipe
	lbs	
Size	mm	240 x 205 x 255
	inch	9,4 x 8 x 10

Description of tool



- | | |
|---------------------------------------|---------------------------------------|
| 1. Power supply cord | 13. Roller axle |
| 2. Operating switch | 14. Cutting blade cover |
| 3. Locking button of operating switch | 15. Threaded connection |
| 4. Cutting speed switch | 16. Ejector pipe |
| 5. Handle | 17. Dustbag |
| 6. Hand rest | 18. Air inlet openings |
| 7. Scale for depth adjustment | 19. Motor housing |
| 8. Control knob for depth adjustment | 20. Adjustment screw for guide roller |
| 9. Adjustable guide roller | 21. Locking screw |
| 10. Rear roller | 22. Positioning arrows |
| 11. Tracking wheel | |
| 12. Spacers | |

Operating condition

- Adjust the **tracking wheel (11)** with **spacers (12)** to the pitch as required when using nap-rolls, or tiles.
- Fit the **ejector pipe (16)** and **dustbag (17)**.
- Adjust the groove depth.
 - With your left hand push down the **handle (5)** of the drive unit up to the magnet stop.
 - With your right hand on the **control knob (8)** adjust the required groove depth until approx. 3/4 of the material thickness is visible on the scale.
- **Caution: Cutting blade can protrude!**
- Align the tool along the grooving line via the **adjustable guide roller (9)** and the red **positioning arrows (22)**. Pay attention to the direction of cutting!

Operation

- Connect tool to the power supply.
- **Cutting speed switch (4)** set to position 1 or position 2 depend from material thickness.
- Hold the groover by the **handle (5)** (left hand) and by the **hand rest (6)** (right hand).
- Align the marking arrows on the tool (red) with the grooving line. The adjustable **guide roller (9)** should run inside the grooving line and the **rear roller (10)** in the groove.
- Activate the **locking button(3)**. Switch on the **operating switch (2)**.
- Press the handle down to the magnet stop (grooving position).
- The Groover is easy to push forward and straight along the grooving line with the **adjustable guide roller (9)** and the **rear roller (10)**.
- At the end of the groove, switch off the **operating switch (2)** and release the **handle (5)**. The tool will spring back into the starting position.

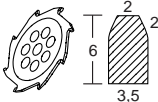
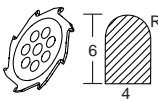
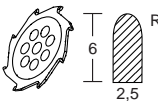
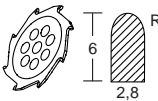
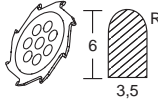
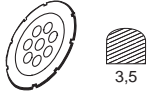
Caution: The cutting blade run out!

- If required set the **guide roller (9)** with the **locking screw (21)** and **adjustment screw (20)** (grooving centre).

Changing the cutting blade

- **Caution: Unplug the tool!**
- Remove the **cutting blade cover (14)**.
- Remove the blade with a box spanner.
- Clean the hub of the tool as well as the cutting blade to be inserted.
- Insert and fit the cutting blade. Check that the cutting blade revolves freely.
- Refit the **cutting blade cover (14)**.

- The LEISTER Groover is fitted with a tungsten carbide tipped cutting blade.
- Only LEISTER tungsten carbide cutting blades should be used.
- Only perforated blades should be fitted to the groover. Otherwise the suction pressure is too low.

Order number	Illustration not to scale	
41		Tungsten carbide tipped blade, trapezium profile
41A		Tungsten carbide tipped blade, round profile
41A.1		Tungsten carbide tipped blade, round profile
41A.2		Tungsten carbide tipped blade, round profile
41A.3		Tungsten carbide tipped blade, round profile
41D		Diamond cutting blade, round profile

MAINTENANCE

- After use, disconnect the tool from the power supply. Remove the **cutting blade cover (14)**. Clean the **cutting blade, cutter housing** and **dustbag (17)**. Refit the **cutting blade cover (14)**.

SERVICE AND REPAIR

- The carbon brushes of the tool's motor should be checked after about 1600 hours running time by your Service Centre.
- Repairs have to be carried out by authorised **LEISTER Service Centres** only. They guarantee a specialized and reliable **repair service within 24 hours** using original LEISTER spare parts.

GUARANTEE AND LIABILITY

- Guarantee and liability are in accordance with the guarantee certificate as well as with the currently valid general business and sales conditions.
- LEISTER Process Technologies rejects any guarantee claims for tools which are not in their original condition. The tools must never be altered or changed.

Technical data and specifications are subject to change without prior notice.

Your authorized Service Centre is: