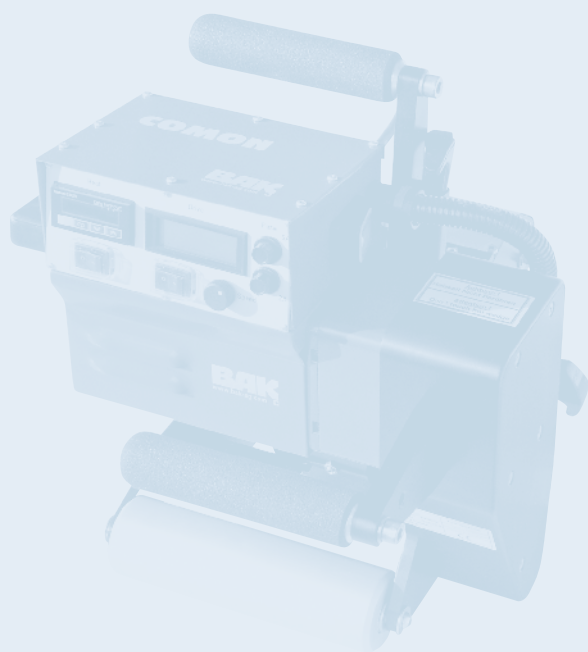


HEAT ON

Plastic welding machines



BAK

www.bak-ag.com

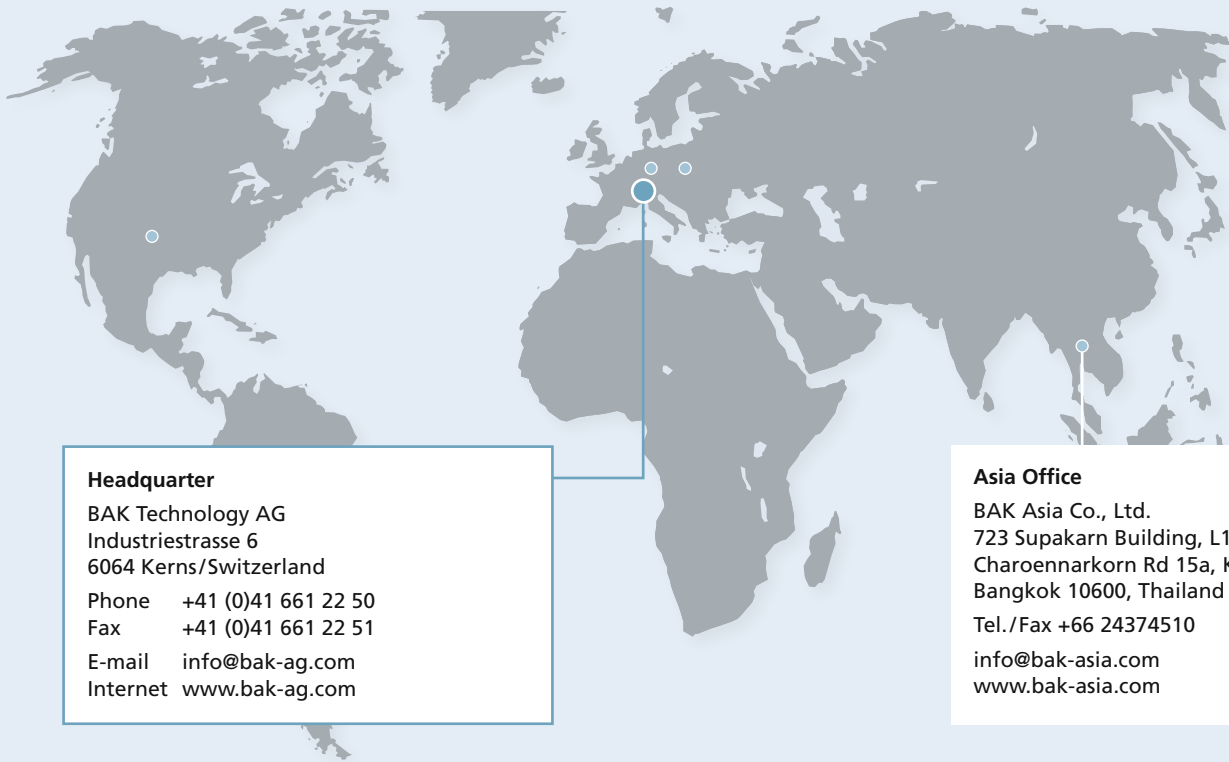


BAK Technology AG
Industriestrasse 6
6064 Kerns / Switzerland

E-Mail info@bak-ag.com
Telefon +41 (0)41 661 22 50
Fax +41 (0)41 661 22 51

*quality
wins!*

HEAT ON



Headquarter

BAK Technology AG
Industriestrasse 6
6064 Kerns/Switzerland
Phone +41 (0)41 661 22 50
Fax +41 (0)41 661 22 51
E-mail info@bak-ag.com
Internet www.bak-ag.com

Asia Office

BAK Asia Co., Ltd.
723 Supakarn Building, L18
Charoennarkorn Rd 15a, Klongsarn
Bangkok 10600, Thailand
Tel./Fax +66 24374510
info@bak-asia.com
www.bak-asia.com

BAK Technology AG is a leading manufacturer of plastic welding equipment, extruder, air heaters and blowers.

We present the best solutions for plastic fabrication, pipe construction, roofing, civil engineering, tunnelling, process heat, tarpaulins, flooring and much more.

BAK is a traditional Swiss company with head quarter in Kerns, Obwalden. Our production- and development facilities are in Switzerland, Germany and Austria.

We are offering a wide range of machines and accessories:

- Hot air tools (hand held)
- Wedge welding machines
- Hand extrusion welders
- Industrial heaters
- Heating- & folding machines
- Hot air welding machines
- Hot air blowers
- Industrial extruder
- Industrial blowers
- Test equipment

BAK, quality wins! Best quality products and customer service are the most important to us!

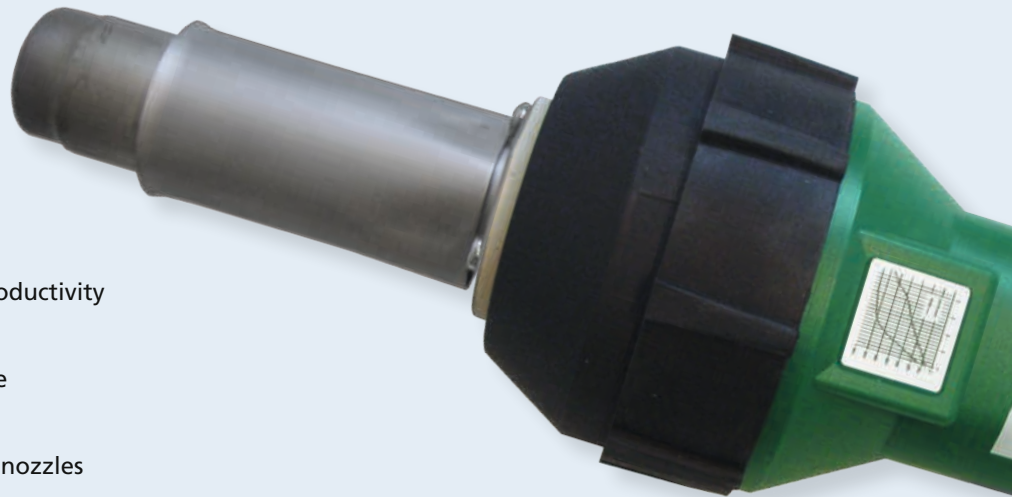
Through our experience of many years and the continuous development within the market we make sure to only offer best quality and service to our demanding customers. We guarantee ideal customer service all over the world with the trustful partnership to our distributors who are placed in over 40 countries.

Hot air welding tool

RION

Field tested, cost-effective, handy

- optimal performance / best price
- high speed welding enables high productivity
- stepless adjustment of temperature
- easy welding with ergonomic handle
- high quality
- heater tube for push fit or screw on nozzles
- large accessories range



The high-performance hand gun to weld all different types of thermoplastic materials, for roofing, flooring, tarps, plastic fabrication and many more.

Technical data

Voltage	V	120/230
Frequency	Hz	50/60
Power consumption	W	1600
Temperature	°C	20–650
Air flow	l/min	approx. 250
Static pressure	Pa	approx. 3000
Noise level	dB	64
Size	mm	100 x 340, handle Ø 56
Weight	kg	1,3 with cord
Markings		CE

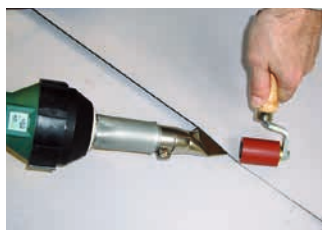
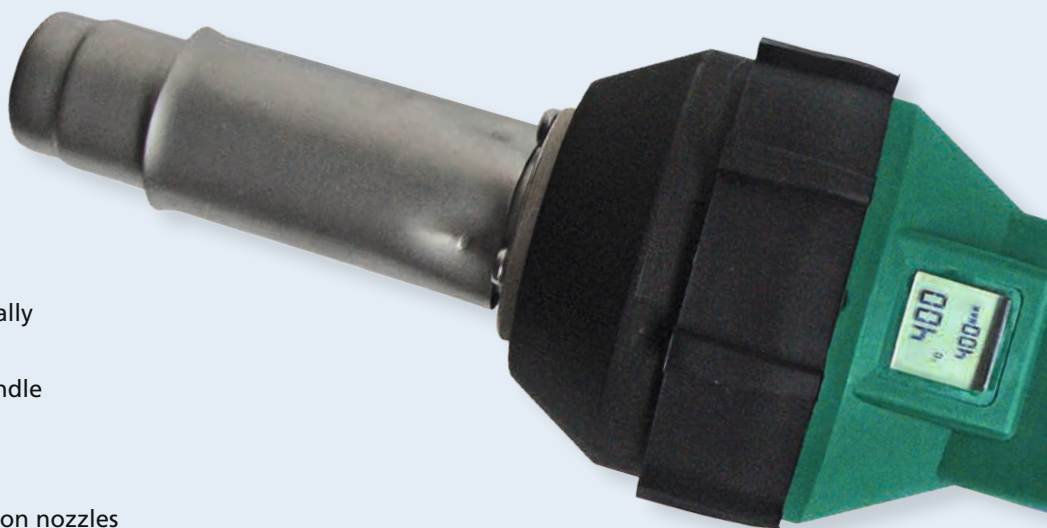
On request also available with brushless motor.

Hot air welding tool

RION DIGITAL

Ergonomic,
reliable,
precise

- digital read out of set and actual temperature
- stepless adjustment of electronically controlled temperature
- easy welding with ergonomic handle
- light and handy
- high quality
- heater tube for push fit or screw on nozzles
- large accessories range



We made welding easy for you! The practical digital hot air welding gun with ergonomic handle for the welding of all kinds of thermoplastics.

Technical data

Voltage	V	120/230
Frequency	Hz	50/60
Power consumption	W	1600
Temperature	°C	20–600
Air flow	l/min	approx. 250
Static pressure	Pa	approx. 3000
Noise level	dB	64
Size	mm	100 x 340, handle Ø 56
Weight	kg	1,3 with cord
Markings		CE

On request also available with brushless motor.

Hot air welding tool

LIION

Battery powered, innovative, compact

- long operating time (45 minutes on highest temperature)
- signal before battery is empty
- easy to recharge
- backpack included in order
- high performance



The first professional welding tool with a battery. To weld all different kind of thermoplastic materials, for roofing, flooring, tarps, plastic fabricating and much more.

Technical

Voltage	V	max. 60
Power consumption	W	max. 1200
Temperature	°C	20–650
Air flow	l/min	150
Static pressure	Pa	ca. 1600
Noise	dB	55
Size hand tool	mm	340x100, handle Ø 56
Weight hand tool	kg	1,5
Weight total		7,5
Markings		CE

Hot air blower

ERON

Powerful,
ergonomic,
flexible

Perfect for:

- shrinking
- drying
- soldering
- heating
- activating
- welding
- bending



Stepless temperature adjustment up to 650°C. Powerful with ergonomic handle, for different applications and with a complete line of accessories like nozzles, reflectors, etc.

Technical data

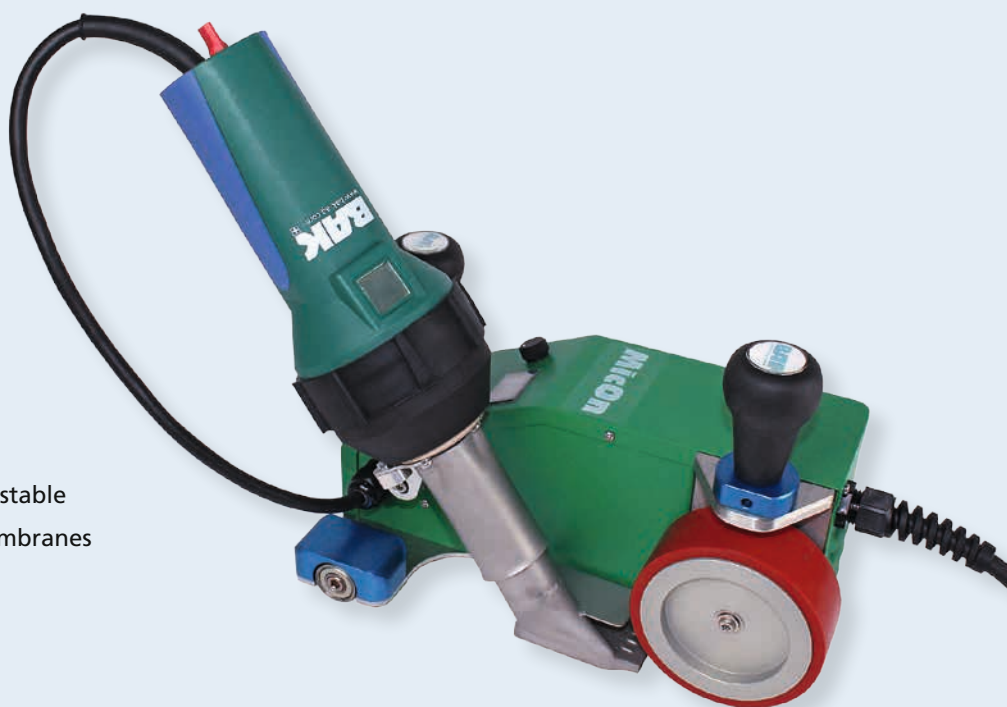
Voltage	V	120/230
Frequency	Hz	50/60
Power consumption	W	2300/2700/3400
Temperature	°C	20-650
Air flow	l/min	approx. 600
Static pressure	Pa	approx. 3000
Noise level	dB	64
Size	mm	320x94, handle Ø 64
Weight	kg	1,5 with cord
Markings		CE

On request also available with brushless motor.

Semi-automatic welding machine

MICON, MICON E

Innovative,
light,
smart



- stable and robust design
- speed and temperature stepless adjustable
- for the welding of thermoplastic membranes
- constant temperature and speed
- easy to handle
- pressure is given manual



The economic driven hand tool. Closes the gap between hand welding tool and automatic welding machine.

Available for 30 or 40 mm welding seam.

Technical data

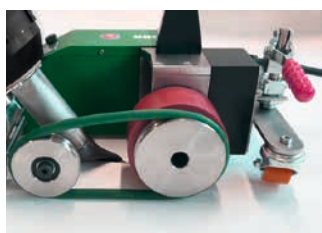
Voltage	V	230/120
Frequency	Hz	50/60
Power consumption	W	2100/1700
Temperature	°C	20-600
Speed	m/min	max. 4
Size (l x w x h)	mm	400 x 170 x 330
Weight	kg	6,8
Markings		CE

Roof welding machine

TECHON

Compact,
innovative,
practical

- small and handy
- low current consumption
- digital read out of temperature and speed
- automatic drive start
- welding seam 40 mm



The small, full automatic welding machine for all jobs on the roof.

Technical data

Voltage	V	120/230
Frequency	Hz	50/60
Power consumption	W	1700/2100
Temperature	°C	20-600
Speed	m/min	0.5-4
Size (l x w x h)	mm	450 x 230 x 320
Weight	kg	17
Protection class I		⊕
Markings		CE

ROOFON, ROOFON DIGITAL

Small, low-priced, light

- for the welding of thermoplastic roofing membranes
- stepless adjustment of speed, air flow and temperature with potentiometer
- automatic drive start system
- wrinkle-free welding
- seam width of 40 mm
- digital control and read out of temperature and speed (RoofOn Digital, see picture below)



Perfect seam quality of 40 mm even though its very light weight. The RoofOn guarantees wrinkle-free welding through our exceptional technology.

Technical data

Voltage	V	230/120
Frequency	Hz	50/60
Power consumption	W	3400/2900
Temperature	°C	20–600
Speed	m/min	0,5–12
Air flow max. (20°C)	l/min	500
Air flow	%	50–100 stepless
Noise level LpA	dB	64
Size (l x w x h)	mm	450 x 330 x 220
Weight	kg	15 with 5 m cord
Protection class I		⊕

ROOFON MULTI/LT

User-friendly,
compact,
light

- for the welding of thermoplastic roofing membranes
- movable rollers
- digital control and read out of temperature and speed
- stepless adjustment of air flow
- automatic drive start system
- wrinkle-free welding



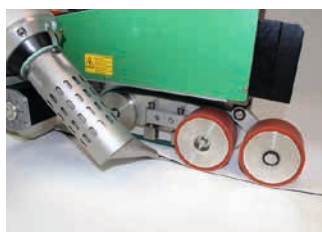
Discover the RoofOn Multi, the all-rounder for the work on small roofs and details.
Available without digital display in the version LT.

Technical data		
Voltage	V	230
Frequency	Hz	50/60
Power consumption	W	3000
Temperature	°C	20-620
Speed	m/min	0-6
Air flow (20°C)	l/min	500
Air flow	%	50-100
Noise level LpA	dB	64
Size (l x b x h)	mm	380 x 340 x 700 (incl. guide bar)
Weight	kg	21
Markings		CE

LARON 21

Innovative, efficient, high-speed

- continuous operation possible because of brushless motors
- designed for the most demanding job sites
- digital display to check voltage before operation
- air flow, speed and temperature stepless adjustable
- for the welding of roofing membranes
- welding of modified bitumen possible with converting kit 80 mm or 100 mm
- Integrated GPS tracker – location of the machine is known at every moment



Easy to handle and user friendly due to optimal design and balance. Work now even more efficient with the LarOn 21, the fastest automatic welding machine in the market. You choose your optimum welding speed anywhere between 0,5–21 m/min.

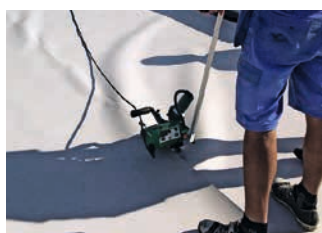
Technical data

Voltage	V	230/400
Frequency	Hz	50/60
Nominal capacity	W	3600/4600
Power consumption		4600/5700
Temperature	°C	20–620
	°F	68–1148
Speed	m/min	0,5–21
	f/min	1,6–68.8
Size (l x w x h)	mm	610 x 410 x 320
Weight (with weights)	kg	42
	lbs	92
Markings		CE

STEEPON

Safe welding,
handy,
field-tested

- designed for the most demanding job sites
- speed and temperature stepless adjustable
- for the welding of all roofing membranes
- for the work on flat and pitched roofs
- constant pressure, temperature and speed
- for loose laid membranes
- brushless and easy to maintain



Suitable for flat and steep/pitched roofs due to clamping system. For perfect welding seams on any underground.

Technical data

Voltage	V	120/230
Frequency	Hz	50/60
Power consumption	W	1800
Temperature	°C	max. 600
Speed	m/min	5
Size (l x w x h)	mm	360 x 330 x 310
Weight	kg	8
Markings		CE

ACCESSORIES



Pressure roller 28 mm (silicon)
Order no. 5106977



Pressure roller with ball bearings (brass)
Order no. 5106972



Angled nozzle (Ø 32 mm) 20 mm 90°
push fit
Order no. 5107124



Pressure roller 40 mm (silicon)
Order no. 5106975



Fillet coater
Order no. 5201324



Angled nozzle (Ø 32 mm) 20 mm 60°
push fit
Order no. 5107125



Pressure roller 28 mm (PTFE)
Order no. 5106976



Chamfer plane
Order no. 5201445



Wide slot nozzle (Ø 32 mm) 30 x 2 mm 15°
push fit
Order no. 5105494



Pressure roller 40 mm (PTFE)
Order no. 5106971



Hand grooving tool
Order no. 5106966



Wide slot nozzle (Ø 32 mm) 40 mm
push fit
Order no. 5107132



Pressure roller power
Silicon 40 mm 5106983
PTFE 40mm 5106984



Spatula
Order no. 5106969



Wide slot nozzle (Ø 32 mm) 40 mm perforated
push fit
Order no. 5107133



Pressure roller 80 mm (silicon)
Order no. 5106974



Spatula slide
Order no. 5200092



Angled nozzle SP20
right Order no. 6660004
left Order no. 6660005



Pressure roller 90 mm (PTFE)
Order no. 5800226



Wide slot nozzle (Ø 32 mm) 20 mm
push fit
Order no. 5107123



Wide slot nozzle (Ø 50 mm) 70 x 10 mm
Order no. 5107258

ACCESSORIES



Wide slot nozzle
(Ø 50 mm) 75 x 2 mm
Order no. 5107266



Tacking nozzle
screw on M14
Order no. 5106988



Adapter with thread
M10 (Ø 32 mm)
Order no. 5201013



Wide slot nozzle
(Ø 50 mm) 150 x 12 mm
Order no. 5107270



Drawing nozzle
screw on M14
Round 3 mm 5113876
Round 4 mm 5113874
Round 5 mm 5113875



Adapter with thread
M14 (Ø 32 mm)
Order no. 5201014



Tubular nozzle
(Ø 32 mm) 5 mm
push fit
Order no. 5100303



Drawing nozzle with tacking tip
screw on M14
Round 3 mm 5113666
Round 4 mm 5113399
Round 5 mm 5113873



Sieve reflector
10 x 12 mm (Ø 8,25 mm)
push fit
on tubular nozzle 5 mm
Order no. 5107324



Tacking nozzle
push fit
on tubular nozzle 5 mm
Order no. 5106996



Drawing nozzle without tacking tip
screw on M14
Profile 5,7 mm 5113877
Profile 7,0 mm 5106986



Sieve reflector
(Ø 32 mm) 35 x 20 mm
Order no. 6107338



Speed welding nozzle
push fit
on tubular nozzle 5 mm
Round 3 mm 5106989
Round 4 mm 5106990
Round 5 mm 5106991



Draw nozzle with tacking tip
screw on M14
Profile 5,7 mm 5113670
Profile 7,0 mm 5113671



Sieve reflector
(Ø 32 mm) 50 x 35 mm
Order no. 6107337



Speed welding nozzle
push fit
on tubular nozzle 5 mm
Profile 5,7 mm 5106992
Profile 7,0 mm 5106993



Angled adapter
25° angular
for draw nozzle M14
Order no. 5201020



Scraper short 100 mm
Order no. 5200142



Tubular nozzle 5 mm
screw on M14
Order no. 5105622



Angled adapter
40° angular
for draw nozzle M14
Order no. 5201021



Scraper long 220 mm
Order no. 5200143



Scraper
Order no. 5106967



Keder kit PlanOn
20 mm Order no. 5230189
30 mm Order no. 5230192
40 mm Order no. 5230193



JAMAS Membrane cutter
Order no. 5201230



Scraper 2 edge
Order no. 5201470



**Guide handle
ProtOn / SteepOn**
Order no. 6600298



Test needle PVC
Order no. 5201700



Scraper 3 edge
Order no. 5201440



Walking support MicOn
Order no. 6600319



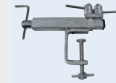
Test needle PE
Order no. DX073



**Scraper with
double handle**
Order no. 5200140



**Bitumen welding kit
LarOn**
80 mm Order no. 6108923
100 mm Order no. 6108924



Tensiometer Handy
Order no. 5200171



Welding seam planer
Order no. 5200146



**Metal case
RiOn / ErOn**
Order no. 5201000



Sheet puller
Order no. DX071



**Hook knife
with cover**
Order no. 5800000



Metal case LarOn
Order no. 5201001



Carbide blade
for RotOn
Round 2,8 mm 6102403
Round 3,5 mm 6102405
Trapeze 3,5 mm 6102401



Hem kit PlanOn
Adjustable for hem width
20, 25, 30, 35, 40 mm
Order no. 5230109



**Metal case
PlanOn / RoofOn /
ComOn / SteepOn / ProtOn**
Order no. 5201008
RoofOn Multi
Order no. 5232551



Welding rod
Different types, profiles and
colours

HeatOn-GROUP

— YOUR BEST CHOICE —

Consulting – Sales – Training – Service – Development

Beratung – Verkauf – Schulung – Service – Entwicklung

BAK
www.bak-ag.com 

DOHLE
www.dohle-extruder.de

HERZ
www.herz-gmbh.com



BAK Technology AG

Industriestrasse 6
6064 Kerns/Switzerland

Tel. ++41 (0)41 661 22 50, Fax ++41 (0)41 661 22 51
e-mail info@bak-ag.com